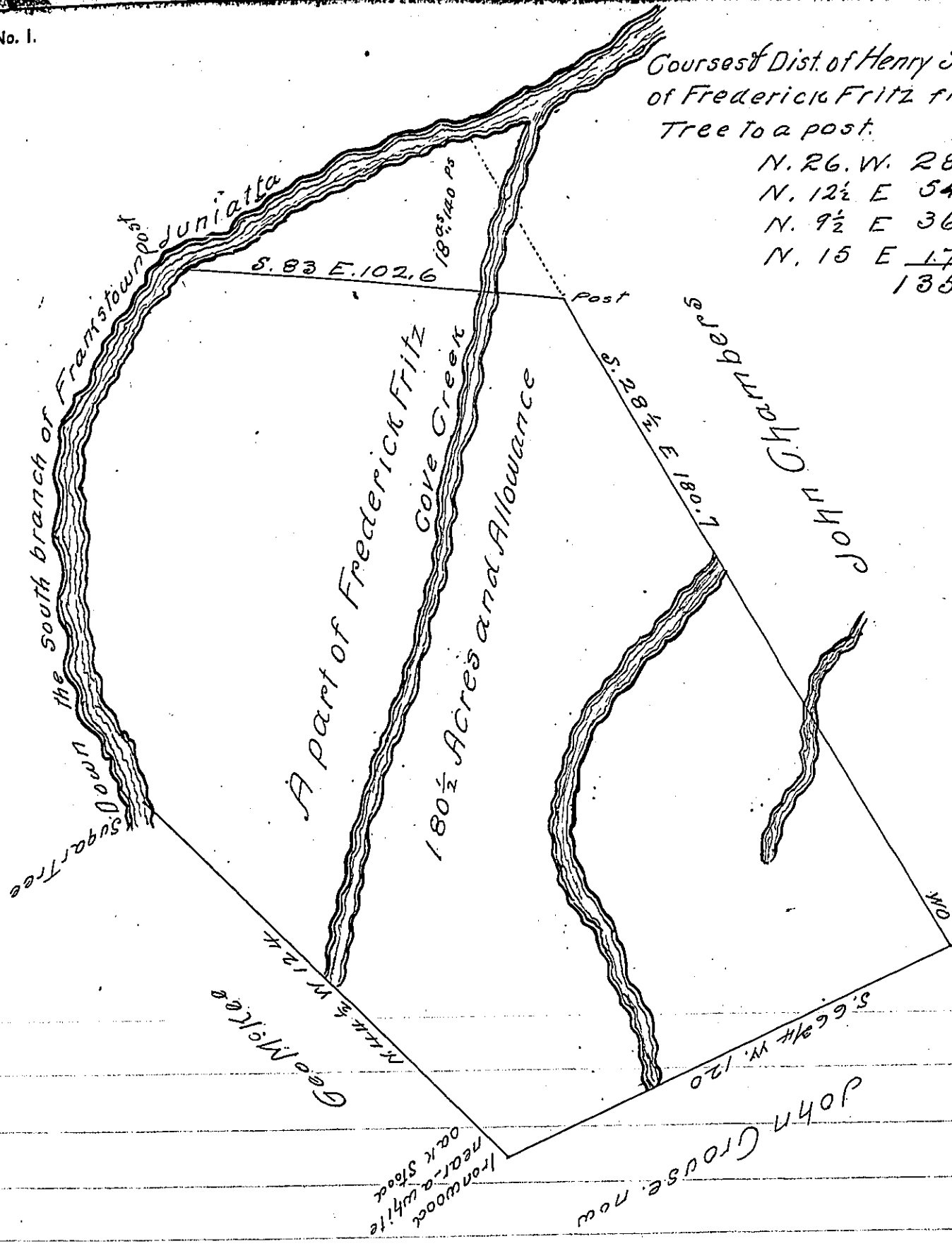


Courses & Dist. of Henry Stingloofs part of Frederick Fritz from a Sugar Tree to a post.

- N. 26. W. 28
- N. 12½ E 54
- N. 9½ E 36
- N. 15 E 17.3
- 135.3



Situate in Frankstown Township Huntingdon County containing one hundred eighty & a half Acres & allowance first surveyed the twenty third day of May 1765 in pursuance of a Warrant granted to Frederick Fritz dated 31st May 1762 By Richard Tea late Deputy Surveyor and contained one hundred eighty & 1/2 acres and divided from the residue of said tract September 23^d 1813

By Jno Morrison D.S.

Rich^d T. Leech Esq^r
Surveyor General

IN TESTIMONY that the above is a copy of the original remaining on file in the Department of Internal Affairs of Pennsylvania, made conformably to an Act of Assembly approved the 16th day of February, 1833, I have hereunto set my Hand and caused the Seal of said Department to be affixed at Harrisburg, this twenty fourth day of October 1904

James P. Brown
Secretary of Internal Affairs